

What is a safety management system (SMS)?

A safety management system (SMS) is a set of policies, procedures and plans that systematically manages health and safety at work and can help to minimize the risk of injury and illness from workplace operations. Safety management systems also focus on improving the safety culture around engagement and reporting helping to reduce workplace risk throughout the entire organization.

Organizations are not only bound by ever-tightening regulatory & compliance standards, but also have a duty of care to keep their workplaces safe. Modern SMSs go beyond just health & safety management with coverage across other critical areas such as quality, environment & risk.

An SMS is also closely related to and referred to as an EHS or HSE (Environment, Health & Safety) management system or EHSQ (Environment, health, safety and quality) management system.

Who needs a safety management system?

Safe workplaces are paramount. It isn't just something that every employee deserves, safe work environments make great business sense. Apart from improving compliance with laws related to workplace safety, the productivity gained and costs saved by organizations go directly to the bottom line.

Some of the key benefits are:

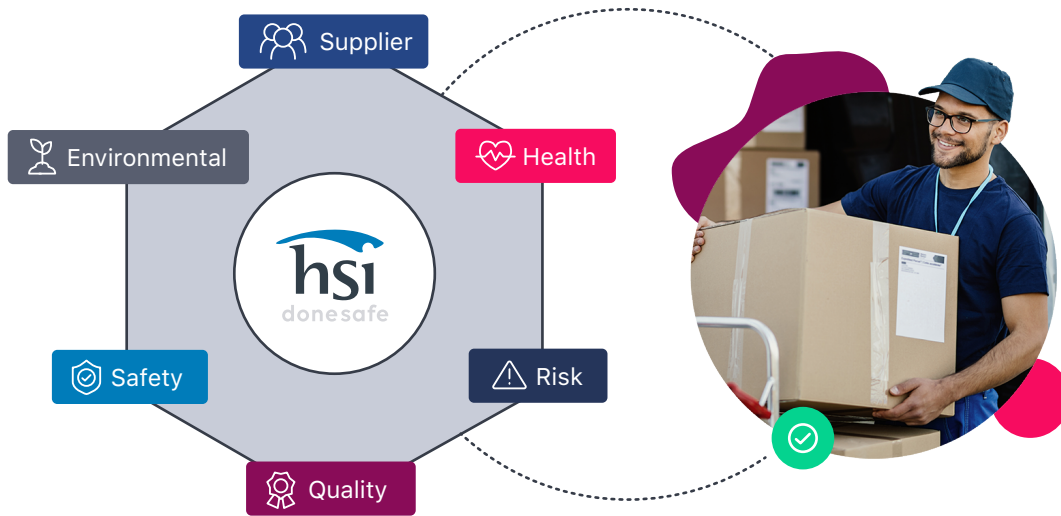
- Reduced risk of injuries and illnesses preventing resource bottlenecks and costly claims
- Tighter implementation and monitoring of safety controls that lead to lower risk
- Identifying and mitigating hazards that cause incidents and injuries
- Meeting and exceeding quality, sustainability and environmental standards
- Driving greater knowledge, awareness and learning to help drive EHSQ outcomes





Meet the cloud-powered SMS for modern business!

The HSI SMS is designed as an end-to-end EHS platform built on the cloud for today's digitally transformed and on-the-go workplaces to tackle any requirement. It helps organizations to unify all their EHS use-cases, employees, suppliers, contractors, and vendors across all their locations, devices and workplaces. The powerfully configurable platform enables the advanced visibility, adaptability and mobility required by all levels regardless of complexity to deliver insight-led EHS outcomes.



Core Platform Capabilities:

- **Fully configurable:** Build any modules without developer involvement easily with extensive configurability out of the box. Advanced configurations are supported by a dedicated professional services team.
- **Mobility:** HSI's SMS is an online cloud powered platform with multi-device support including iOS and Android mobile devices. It allows users to easily record incidents, hazards or audits both on and offline.
- **Smart forms:** Simple drag and drop functionality makes creating and deploying forms effortless. Access a large selection of pre-built templates for customization or create forms from scratch overlaid with smart tools such as conditional logic for ultimate efficiency.
- **Intelligent workflow automations:** Create frictionless workflow experiences to unlock workforce productivity while simplifying adherence. Discover powerful automations and notification triggers all designed to accelerate safety outcomes throughout the entire organization.
- **Data reporting:** Turn reporting into actionable insights through beautiful dashboards that uncover why things happen and how to improve compliance performance in the future. Access pre-configured dashboards or work with our professional services team to build custom reports that combine best of breed BI capabilities with a tailored EHS experience.
- **Integration:** HSI's SMS platform seamlessly integrates via a RESTful API or via SFTP to easily connect with existing 3rd party applications.

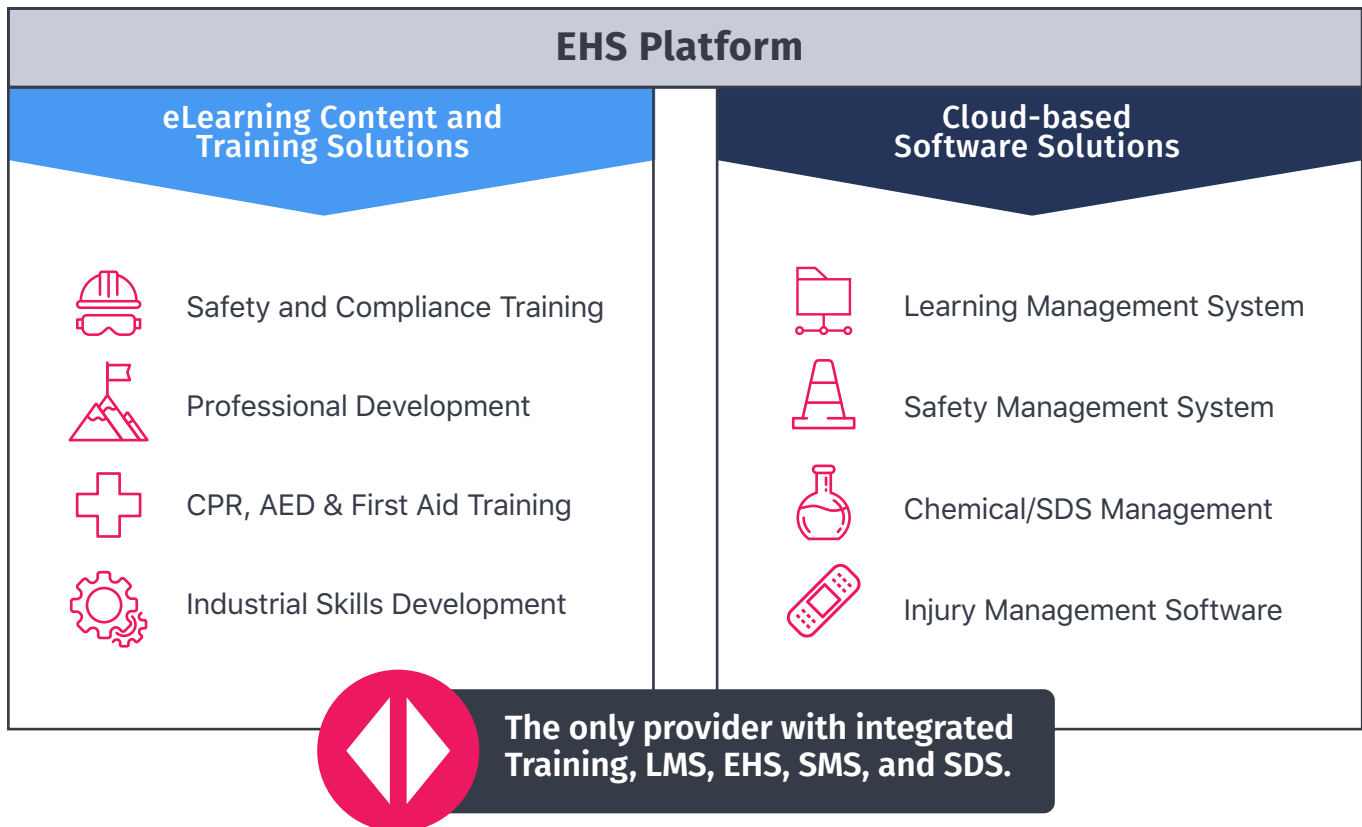


Why HSI EHS and Safety Management?

In the overarching world of ESG and EHS, companies need to consolidate solutions not just for each-of-use, but for data management. HSI is your single-source partner for ESG, EHS, Compliance, and Professional Development solutions. HSI provides integrated e-learning content, training solutions, and cloud-based software designed to enable your business to improve safety, operations, and employee development.

Organizations are looking for consolidation of both vendors and data. HSI allows you to tie together your LMS and training, EHS and SMS platforms, and chemical SDS management.

- **E-learning content** for safety, compliance, and professional development
- **Training solutions** for all business types, employees, and industries
- **Cloud-based EHS software** integrated across all solutions
- **Single-source** partner to consolidate vendors and costs





Start solving the most common workplace challenges!

EHSQ management unified

Pick and choose from over 30+ EHSQ modules to create solutions perfect for your organization – create a complete solution or simply fill a gap within your existing solution.

- Incidents
- Risk Management
- Audit Management
- Supplier
- Hazard Management
- Fleet & Asset Management
- Visitor & Contractor Management
- Vendor Management
- Observations & Behavior
- Knowledge Base
- Infectious Disease Tracking
- Checklists & Inspections
- Investigations
- Document Control
- Corrective Actions
- Site Assessments
- Change Management
- Risk & Control Library
- Contracts
- PPE
- Inductions
- Workers Compensation
- SDS Chemical Management
- Near Misses
- JSA/SWMS
- Injury Management
- Food Safety
- Plant & Equipment
- COVID-19 return to work
- Health & Hygiene
- Business Continuity Planning (BCP)
- Attestations
- Permit to Work

30+ Modules. Infinite Customizations.

About HSI:

HSI is your single-source partner for EHS, Compliance, and Professional Development solutions. HSI provides integrated e-learning content, training solutions, and cloud-based software designed to enable your business to improve safety, operations, and employee development. Across all industries, we help safety and technical managers, human resources, first responders, and operational leaders train and develop their workforce, keep workers safe, and meet regulatory and operational compliance requirements. We are a unique partner that offers a suite of cloud-based software solutions including learning management, safety management, chemical SDS management, and more, integrated with our content and training so businesses can not only monitor and manage multiple workflows in one system, but train employees via one partner.