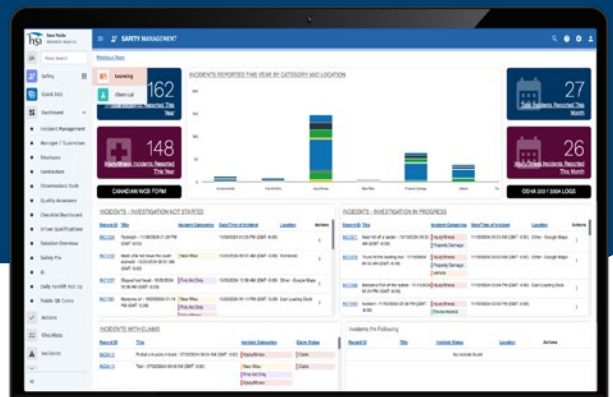


HSI Intelligence: Next-Gen AI for Safety and Learning

HSI Intelligence is HSI's advanced AI solution designed to unify and elevate both EHS and LMS systems, creating a smarter, more proactive approach to workplace safety and training. HSI Intelligence doesn't just react—it predicts, recommends, and evolves alongside your organization's unique needs.



Advanced AI Key Features

Ask a Question

- **Description:** A user-friendly interface for quick, AI-powered answers on safety, compliance, and training topics.
- **Benefits:** Instant insights, resource links, and course recommendations help users deepen their understanding of essential topics.

Enhanced Catalog Search

- **Description:** AI-enhanced keyword search across our 5,000+ course library.
- **Benefits:** Precise, relevant results tailored to user needs, accelerating training discovery and assignment.



Learning Path Recommendations

- **Description:** Customizable learning paths that optimize employee training sequences in curriculum building.
 - **Admin View:** Provides the ability to trigger events that generate course recommendations based on individual member training history. Admins can also directly enroll members into recommended courses, ensuring they receive the most relevant training.
 - **Member View:** A new dashboard ribbon displays recommended courses tailored to each member's training history and available additional resources. Members have the ability to "Self-Enroll" into these courses, enabling a proactive approach to learning and development.
- **Benefits:** Streamlined learning journeys that enhance engagement and retention, reducing admin time and empowering employees to take charge of their professional growth.

Training & Corrective Action Recommendations

- **Description:** Tailored recommendations for corrective actions and training based on incident reports or hazards, ensuring your organization stays a step ahead in safety management.
- **Benefits:** This feature transforms incident responses from reactive to proactive by automatically suggesting targeted training and corrective actions to address specific issues. By tailoring recommendations to real incidents, HSI Intelligence helps prevent future risks, reduces recurrence, and ensures that each team member is equipped with the skills and knowledge needed to maintain a safe workplace. Safety professionals save time on incident follow-up, allowing them to focus on broader safety strategies.

Spot the Hazard

- **Description:** AI-powered image analysis that identifies potential hazards in photos and provides corrective suggestions. This feature supports proactive incident prevention and streamlines risk assessments.
- **Benefits:** Spot the Hazard brings a new level of visual intelligence to safety management. By analyzing photos for hazards, it enables teams to proactively address risks before incidents occur, supporting a culture of prevention. This tool not only saves time in manual hazard identification but also ensures

a consistent, unbiased assessment of visual risks across worksites. With actionable suggestions included, users can quickly implement corrective actions, enhancing workplace safety and efficiency.

Document Creation

- **Description:** AI Document Creation leverages generative AI to help users create and update safety and process documents directly within the HSI platform. This feature provides a starting point for policies, custom training content, safety checklists, and more, tailored to each organization's unique requirements.
- **Benefits:** This feature functions as a digital assistant to help managers create new documents or update existing documents, saving administrative time and getting new process documentation into the hands of employees faster.

Summary Creation

- **Description:** AI Summaries for EHS enable users to generate brief synopsis of key points of incidents and EHS records with a single click. Summaries automatically update as records evolve and respect user permissions to safeguard sensitive information.
- **Benefits:** Save time by quickly accessing key details, identifying trends, and focusing on priority issues, streamlining the review process for managers and employees.

A Unified, AI-Driven Platform

HSI Intelligence is **seamlessly embedded** across both our EHS and LMS systems:

- **Proactive Incident Management:** From recommendations based on incident data to customized corrective actions, HSI Intelligence helps prevent risks before they escalate.
- **Enhanced Training:** From catalog searches to tailored learning paths, our AI optimizes training for both administrators and end users.
- **Single Platform Experience:** Unified EHS and LMS experience under HSI Intelligence means one platform to manage safety and learning needs effectively.

Benefits of HSI Intelligence

- **Predictive Insights:** Identifies risks and offers proactive solutions before incidents occur.
- **Efficient Training Management:** Recommends relevant courses based on incidents, hazards, or user training history.
- **Unified Platform:** Integrates EHS and LMS tools seamlessly for a holistic safety and training solution.
- **Adaptive and Evolving:** AI functionality is regularly updated, ensuring your organization stays at the cutting edge of safety.