

# Corrective and Preventative Actions Management

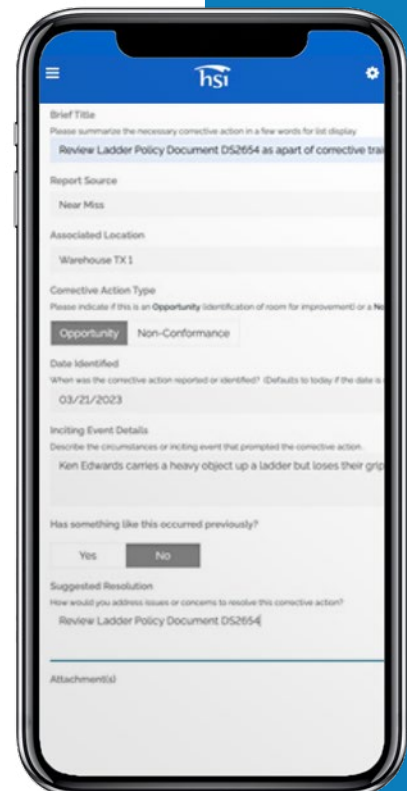
Complete corrective & preventive action management for swift close-outs.

[Organize CAPA's](#) (Corrective & Preventive Actions) from any source in one place. Link to findings and causal factors, set priorities, and enforce SMART goals for corrective and preventive actions. Automations ensure actions are completed on time or escalated when overdue.

## Use Cases

[HSI EHS Corrective and Preventive Actions Management](#) module would benefit organizations which meet any of the following:

- Looking to link findings and causal factors
- Set priorities and enforce SMART goals
- Identify triggering events
- Promote staff accountability by ensuring actions are identified and actioned throughout your organization
- Real-time tracking of your organizations CAPA's
- Identify weaknesses and take data-driven action to prevent recurrences
- Implement a robust root cause analysis
- Demonstrate control with complete end-to-end visibility of your corrective process



## The HSI Difference

**Complete Oversight and Risk Mitigation:** Perform root cause analysis to identify underlying issues, adopting the correct non-conformance actions, and ensuring that they are avoided in the future. Allow the workforce to be your eyes and ears by allowing them to report issues and to work collaboratively to ensure data-driven decisions are made.

**Reduced Administration:** Capture non-conformances from anywhere on any device then have automatic workflow triggered as soon as the issue is raised. Built in escalation notifications allows you to keep everyone in the 'know'. Easily assign corrective or preventative actions such as training and get notified when it's complete.

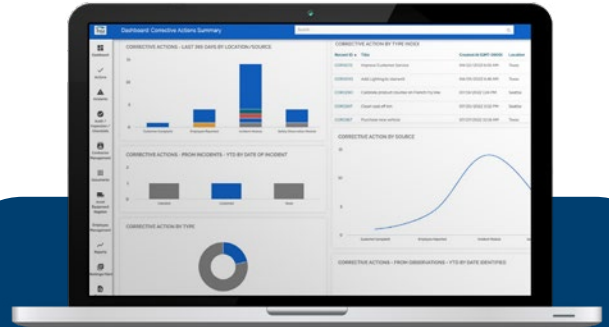
**Ultimate Configurability:** Ensure your CAPA process is effective, efficient and aligned with your organization's objectives, requirements and compliance regulations by configuring workflows, approval process, correct action plans, CAPA tracking, reporting, and more.

**Generate Actionable Insights:** Quickly and easily identify the root cause of non-conformances and evaluate the effectiveness of your CAPA's.

**Flexible Deployment:** Configure our out-of-the-box [document management](#) capability to meet your organizations uniqueness.

**Seamless Connectivity:** Frictionless integration with the broader HSI ESH System and using the same UI. Link to other capabilities such as [learning management](#) to assign corrective training.

**Security, Risk, and Compliance:** Adhere to various standards and regulations including OSHA, DOT, OH&S, ISO 9001, and more.



## Features:

- Use root cause analysis such as fishbone diagrams and cause and effect diagrams
- Store evidence such as documents, photos, videos, and more Integrate with other systems
- Real-time data to track effectiveness of CAPA's and areas for improvement
- CAPA status tracking

## Configurability:

- Forms
- CAPA type
- Automate escalations and notifications
- Control measures
- Workflows
- Action plans
- Root cause analysis
- Review process