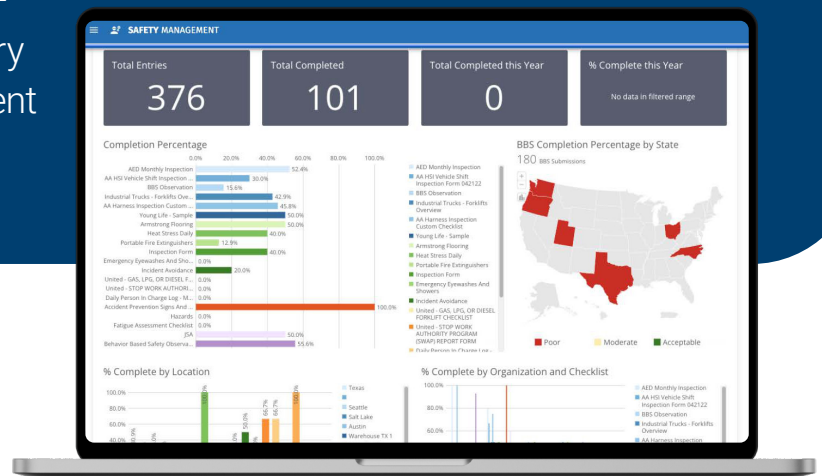


Audit Management

Unlock Excellence and Compliance through Audits

Experience the transformative capabilities of our comprehensive [Audit Management](#), designed to empower your organization with a secure and user friendly system for conducting audits and ensuring workplace excellence, compliance, and sustainability. With [advanced features](#) such as real-time data analysis, reporting, and alerts, our Audit Management enables you to swiftly identify areas for improvement, drive continuous enhancement, and achieve unparalleled success in your EHS program. From enhancing employee engagement to meeting stringent regulatory requirements, our Audit Management is your ultimate capability.



Use Cases

[HSI EHS Audit Management](#) Module would benefit organizations which meet any of the following:

- Governed by strict EHS regulations and standards such as OSHA, DOT, ISO 9001, ISO 45001, and more
- Committed to driving excellence through making informed decisions and implementing corrective actions promptly
- Operate in complex, dynamic, and rapidly changing environments
- Looking to proactively address risks and promote a safer work environment
- Promote employee engagement
- With multiple locations or departments with a need for centralized oversight

The HSI Difference

Complete Oversight & Risk Mitigation:

Proactively identify potential hazards, maintain workplace compliance, and drive continuous improvement in EHS performance through corrective actions.

Reduced Administration: Automate various tasks, such as scheduling audits, sending notifications, and generating reports, saving valuable time and eliminating manual effort.

Ultimate Configurability: Adhere to specific organizational needs, industry standards, and regulatory requirements. Customize forms, approvals, workflows, and more to ensure seamless alignment with unique EHS programs.

Generate Actionable Insights: Send automated alerts for critical events or issues allowing you to respond quickly. Identify issues and trends across behavioral, health and safety, compliance, environmental, training and other areas.

Flexible Deployment: Configure our out-of-the-box module to meet your organization's unique requirements, while increasing employee engagement.

Seamless Connectivity: Frictionless integration with the broader HSI EHS system and using the same UI. Link to other modules such as [corrective actions](#), [contractor management](#), [risk management](#) and more.

Risk & compliance: Adhere to various standards and regulations including OSHA, DOT, OH&S, ISO 9001, ISO 45001 and more.

Features:

- User-friendly interface to increase engagement
- Mobile capability – submit from anywhere, at any time
- Flexible workflow
- Advanced reporting
- Connect to users profiles
- Role based access
- Seamless integration with training and SDS management

