

# Use and Administration of Epinephrine Auto-Injectors

American Safety & Health Institute's *Use and Administration of Epinephrine Auto-Injectors* teaches students about causes of severe allergic reactions, how to recognize and treat anaphylaxis, the use of auto-injectors, legal considerations for administering epinephrine and how to prepare for an anaphylactic emergency.\*

## Intended audience

Childcare providers, school system employees and camp counselors and administrators. This program is also appropriate for training the general public (Good Samaritans).

## Instructor Materials

- *Use and Administration of Epinephrine Auto-Injectors* Program Package
- Includes Instructor Guide, DVD, Sample Student Book and access to digital tools including program PowerPoint®

## Resources

- Streaming video player
- User interface for blended learning platform
- Track past, present and future classes through TC portal
- Mobile app, including offline mode

## Successful completion

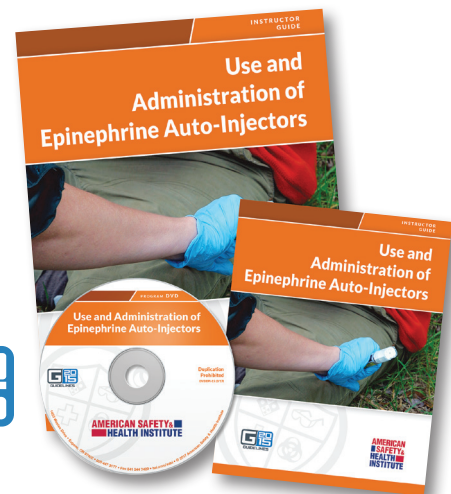
- Complete all course requirements as provided by an authorized ASHI instructor

## Recommended time to complete

- About 30 minutes to an hour
- Successful completion is based on achievement of the core learning objectives rather than a prescribed instruction time

## Topics

- Anaphylaxis
- Epinephrine
- Barriers for Use
- Legal Considerations
- Signs and Symptoms
- Treatment
- Storage
- Inspection
- Preparation



\* Regulations on the administration of epinephrine vary greatly from state to state, and can vary depending on the industry or market segment. Check the HSI regulatory tool in your TC portal for the approved uses of this program in your area.

Visit: [www.hsi.com](http://www.hsi.com) | P: 800-447-3177 | E: [CustomerService@hsi.com](mailto:CustomerService@hsi.com)